

HUMAN TEMPERATURE CONTROL

- ✓ EPIDEMIC CONTROL
- ✓ FACE DETECTION
- ✓ TEMPERATURE ALARMS



24H ACCESS CONTROL DETECTION OF HIGH BODY TEMPERATURE

PROMAX thermal imaging cameras IR-198 and IR-199 models are HBT (high body temperature) fixed measurement systems and they are designed for public or private facilities access control. The system detects faces, takes the temperature and activates an alarm when it is above the established limits.

It is a complete, ideal solution for a continuous tracking of epidemics such as the COVID-19.

A **blackbody** (thermal calibrator) is included to keep the system continuously calibrated to a constant reference temperature preset.



**HIGH RESOLUTION
THERMAL
SENSOR**



**INCLUDES
BLACKBODY**

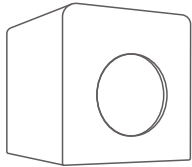


**EPIDEMIC
CONTROL**



**UP TO 10 M
DETECTION
DISTANCE**

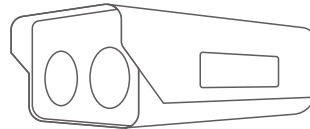
SYSTEM COMPONENTS



Blackbody module

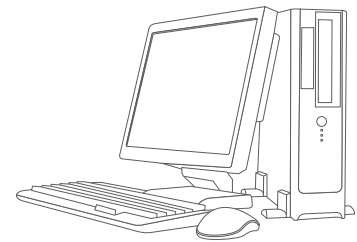
Thermal calibrator device. It delivers a stable, constant specified temperature.

It is installed in the camera field of view, allowing a continuous calibration of the system.



Thermal + CCD camera

The thermal sensor measures the objects temperature in its field of view, and the visible light sensor (CCD) allows detecting faces. The combined use of both sensors allows an individual tracking of each person.

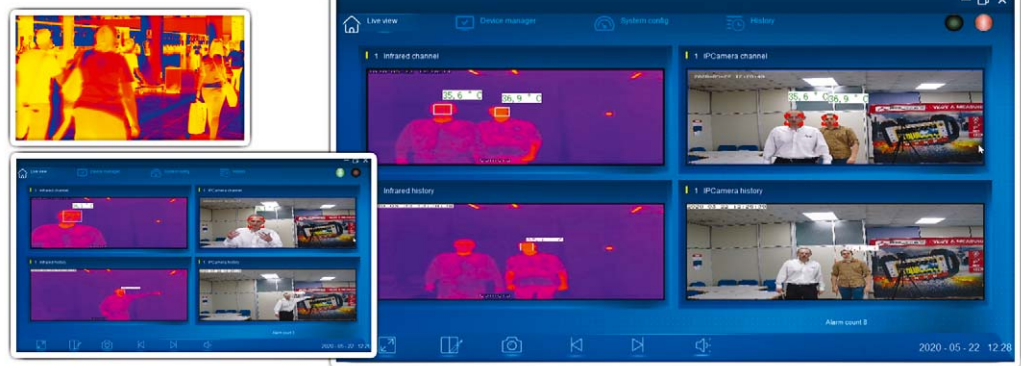


Control software

The thermal image camera is connected via Ethernet to a PC (not included) and the control software detects faces, analyzes the body temperature of each person, sets the maximum admissible temperature and runs user defined alarms.

24/7 ANALYSIS AND TRACKING

The system is stand-alone. It performs an individual tracking of each person in the thermal image camera field of view and activates an alarm when their body temperature is outside the admissible range.



SPECIFICATIONS	IR-198 - HIGH RESOLUTION THERMAL IMAGE CAMERA FOR HBT (*)	IR-199 - VERY HIGH RESOLUTION THERMAL IMAGE CAMERA FOR HBT (*)
THERMAL SENSOR	384x288	640x480
IMAGE MANAGING		
Measuring distance	From 3 to 10 meters	From 3 to 10 meters
Simultaneous, multiple person tracking?	Yes	Yes
Automatic blackbody calibration	Yes	Yes
Continuous video recording	Yes	Yes
FOV (Field of view)	25° x 19°	34° x 26°
Focal distance	18 mm	18 mm
Thermal sensitivity	≤ 0.06 °C	≤ 0.06 °C
Accuracy	≤ ±0.3 °C	≤ ±0.3 °C
Temperature margin	From 20 to 50 °C	From 20 to 50 °C
Operating temperature	From 0 to 40 °C	From 0 to 40 °C
Integrated CCD camera	1920x1080	1920x1080
FEATURES		
Included accessories	Thermal imaging camera, <i>Blackbody</i> , Ethernet connection cable, Power supply	Thermal imaging camera, <i>Blackbody</i> , Ethernet connection cable, Power supply

(*) Devices for HBT (High Body Temperature) detection, for non-medical use.