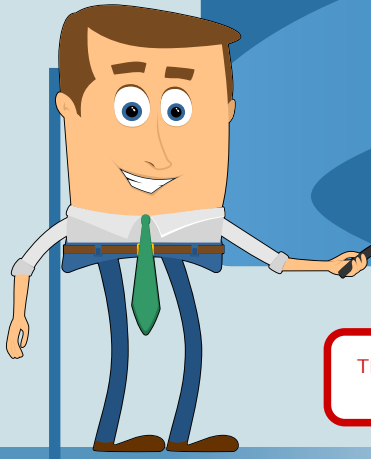


the TRANSPORT STREAM TABLES



THEIR MEANING, THEIR CONTENT AND THEIR PURPOSE

THE TRANSPORT STREAM TABLES (TS) CARRY STANDARDIZED DATA PROVIDED BY THE BROADCASTER INCLUDING INSTRUCTIONS FOR THE RECEIVER TO PROPERLY DECODE THE DIGITAL SERVICES

MANDATORY TABLES

PAT

PROGRAM ASSOCIATION TABLE

This table indicates the location of each service PMT table and identifies each multiplex by its unique PID (Packet Identifier).

PMT

PROGRAM MAP TABLE

It identifies the elementary data streams carrying audiovisual content (video, audio, subtitles, interactive applications or other data) that conform each service or programme. Each data stream is identified by its PID.

NIT

NETWORK INFORMATION TABLE

Information about the network and the organization of its Muxes or TS. By combining their fields, each TS is uniquely identified among all the broadcasts regulated under the ETSI (European Telecommunications Standards Institute).

TDT

TIME AND DATE TABLE

It holds the current UTC (Coordinated Universal Time) date and time. The TOT table, if present, applies the appropriate correction depending on the country/region time zone.

SDT

SERVICE DESCRIPTION TABLE

It contains a description of the services available in the Transport Stream. It specifies the title or name of the service, among other data.

WHAT HAPPENS WHEN THE BROADCASTER MISCONFIGURES THE TRANSPORT STREAM TABLES?

Then, the receiver is dependant on the error tolerance of its internal software to decode the digital services. This is why some television brands or models cannot decode the services that are readily decoded by other receiver. Even when both are connected to the same outlet and receive an optimal RF signal!



YOU CAN USE PROMAX TV ANALYZERS TO FIND ISSUES IN THE TRANSPORT STREAM TABLES



EIT

EVENT INFORMATION TABLE

For each digital service, it provides a description of the current and future events (up to several days). This is the information the receiver uses to build the EPG (Electronic Program Guide)

AIT

APPLICATION INFORMATION TABLE

It provides the decoder with data to gain access to the broadcasting interactive applications such as HbbTV (providing the URL hosting the content).

TOT

TIME OFFSET TABLE

Just like the TDT table it contains the current UTC date and time, but this table adds the offset information of the current country/region time zone and provides the date of the next DST clock shift.

ST

STUFFING TABLE

Sometimes the broadcaster needs to override Transport Stream tables. This table contains references linking to those tables to be overridden.

DIT DISCONTINUITY INFORMATION TABLE

It is inserted in transition points where the service information is discontinuous.

SIT SELECTION INFORMATION TABLE

It describes the services and events contained in a partially stored Transport Stream.

CONDITIONAL ACCESS TABLE

This table provides information on the conditional access systems used in the multiplex. This table must be present for the receiver to open the encrypted services, if any.

CAT

BOUQUET ASSOCIATION TABLE

It contains information on the bouquets. A bouquet is a set of grouped services that may come from one or several networks.

BAT

RUNNING STATUS TABLE

A program can begin before or after the specified time defined in the EIT (Event Information Table) because of last-minute schedule changes. This table updates the event time information quickly and accurately.

RST

OPTIONAL TABLES

THESE TABLES ARE NOT USED IN BROADCAST

They are inserted in those Transport Stream not meeting the standards because they have been partially archived in storage media.

