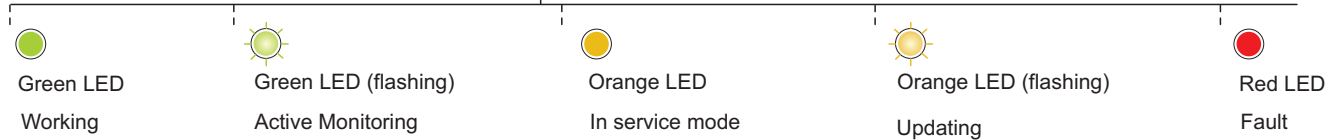


FRONT VIEW



- ① Status LED
- ② CAM* module input connector
(Only available for PROWATCHNeo 2)



REAR VIEW



- ③ ④ ⑤ ⑥ ⑦ ⑧ ⑨ ⑩ ⑪ ⑫ ⑬ ⑭ ⑮ ⑯ ⑰

- ③ Power input connector
- ④ Fuses
- ⑤ Switch on-off button
- ⑥ IPTV Ethernet connector (only available for PROWATCHNeo 2)
- ⑦ ASI output (only available for PROWATCHNeo 2)
- ⑧ ASI input (only available for PROWATCHNeo 2)
- ⑨ External reference signal input 10 MHz (PROWATCHNeo 2 only)
- ⑩ RF signal input connectors (RF inputs depending on configuration)
- ⑪ ETHERNET connector for (NetUpdate / Streaming VA / WebControl**)
- ⑫ USB connector
- ⑬ HDMI™ output
- ⑭ Video / Audio input
- ⑮ Reset / Updates button
- ⑯ RF auxiliary input connector
- ⑰ FC/APC optical input connector (PROWATCH Neo 2 only)

Note: Some of the options shown in the images in this document may not match those on your equipment.
See the attached instruction manual for more information.

* not included ** password : Password

► LOAD DEFAULT CONFIGURATION

- 1 Update version to R29.9 or higher.

- 2 Prepare a TXT file with the name PROMAX_IP.txt and copy it to the root directory of a PENDRIVE.

Content
dhcp:off
10.0.6.60
255.255.255.0
10.0.6.1

← dhcp on/off
← IP
← Mask
← Gateway



PROMAX_IP.txt

- 3 Set the equipment in **SERVICE MODE**



1 Press + 2 Switch on + 3 Drop

Orange Status LED (**SERVICE MODE**)

- 4



Insert a PENDRIVE with the **PROMAX_IP.txt** file

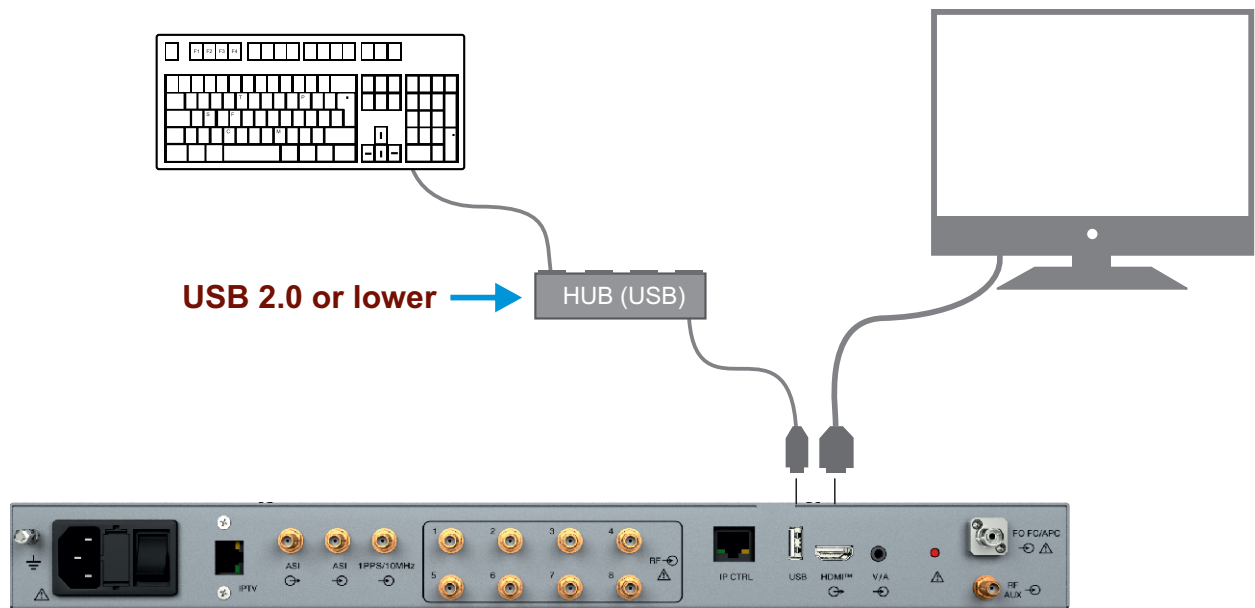
- 5



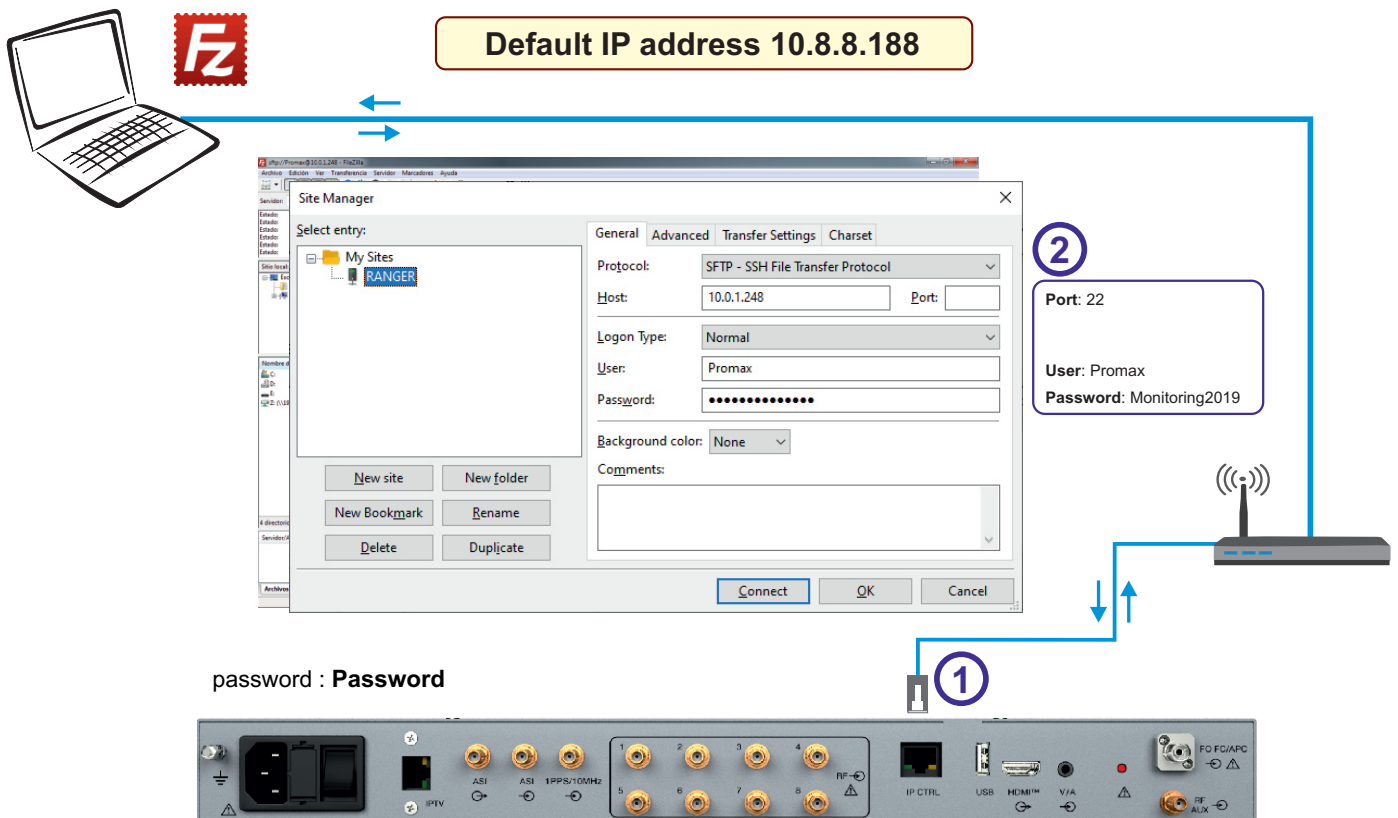
Press between 3 and 7 s to load the PROMAX_IP.txt file

- 6 The equipment restarts

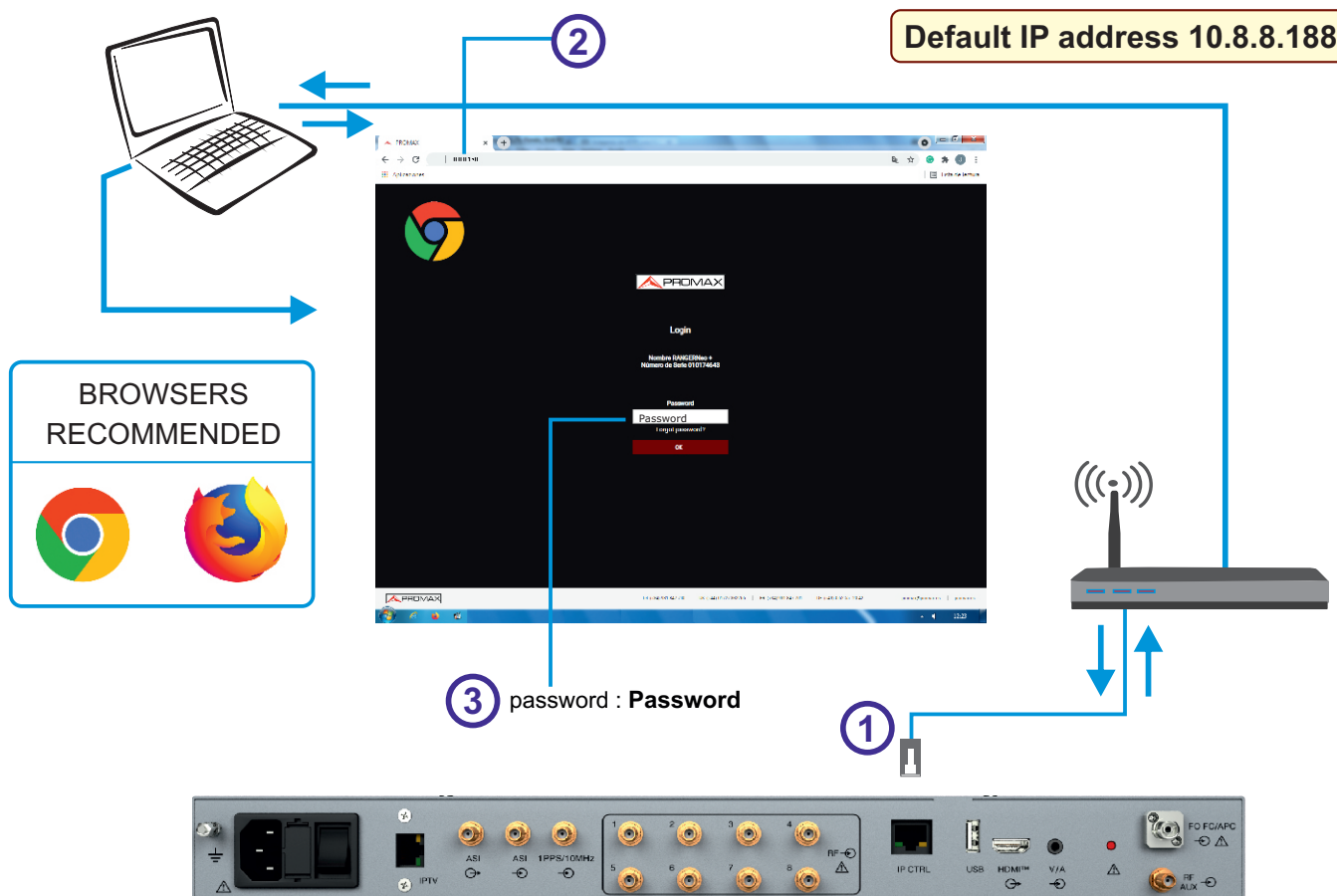
► LOCAL MODE CONNECTION



► SFTP ACCESS

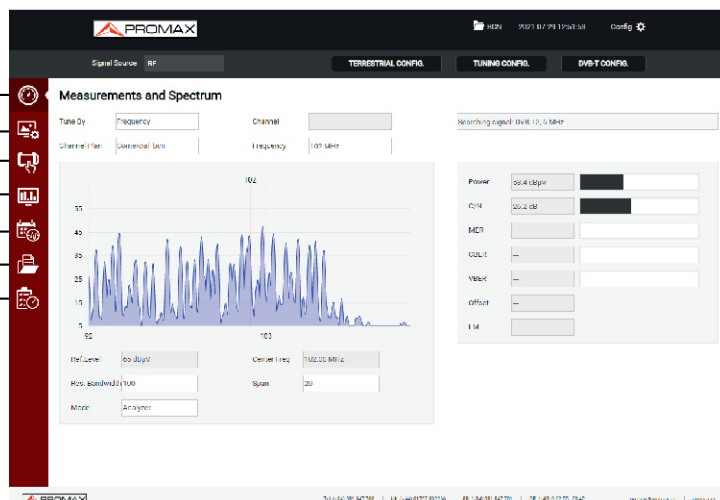


► CONNECTION IN REMOTE MODE AND ACCESS TO THE WEBCONTROL

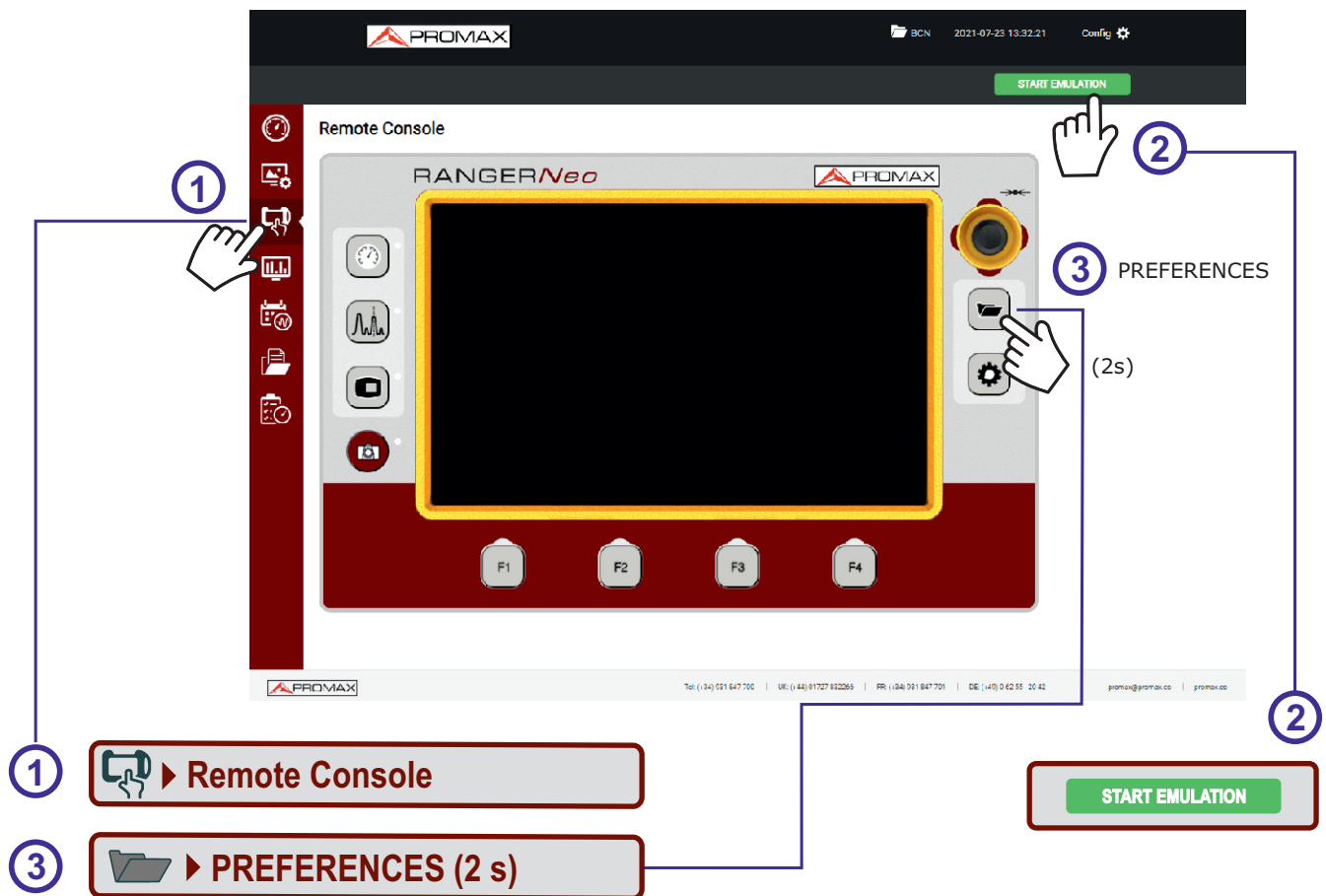


► WEB-CONTROL

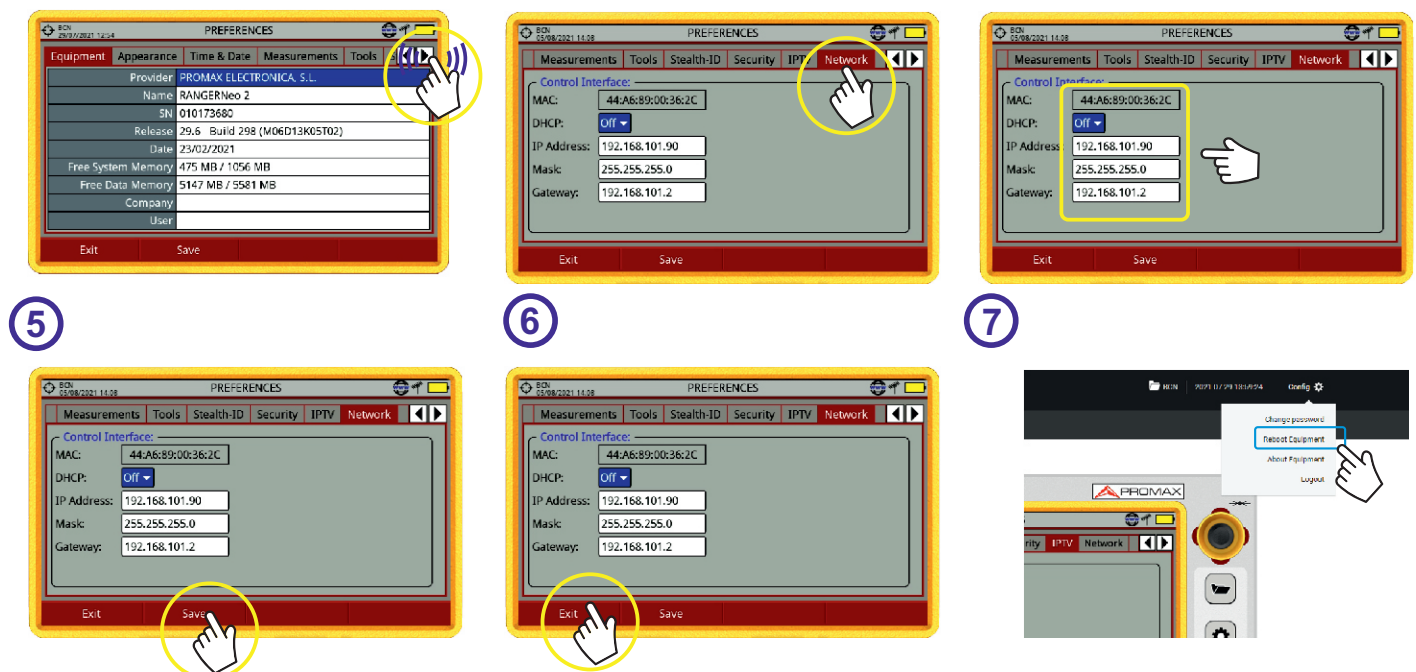
- Measurements and Spectrum
- TV Parameters
- Neo Console
- Monitoring
- Historical Monitoring
- Installations Management
- Task Management



► CHANGE IP VIA WEBCONTROL



Change network settings.



At the moment of pressing "Exit", the communication will be lost because it will have a new IP.

► RECOMMENDED SETTINGS FOR MONITORING



CAUTION

Once recommended parameters have been configured, be sure to press **"Save"** to ensure that settings do not lose in case of disconnection or shutdown.

• TIME ZONE AND TIME CONFIGURATION

Recommended settings



CAUTION

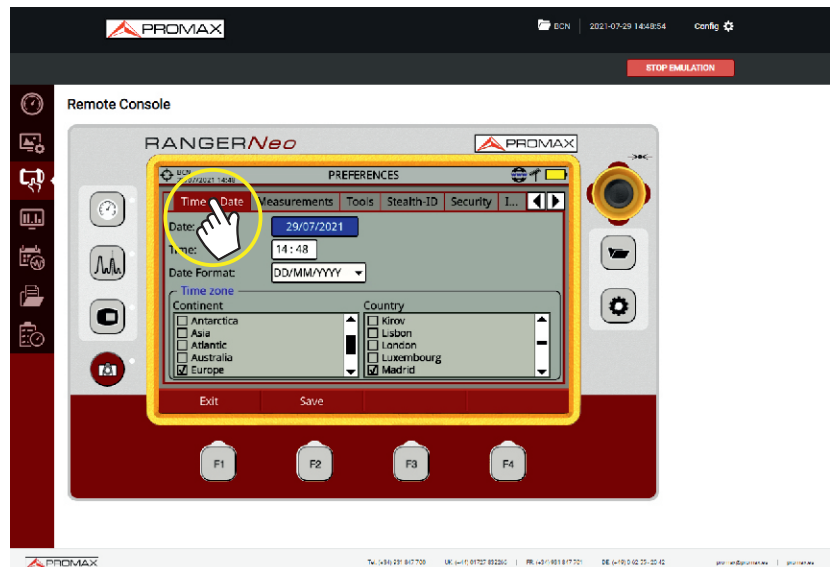
Before carrying out the monitoring, select the geographical zone where the equipment is. Ensure that the equipment has time and date right. See figure below.

1

START EMULATION

2

► PREFERENCES (2s)

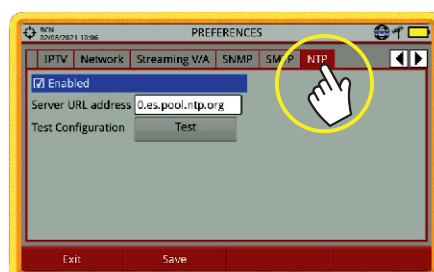


• NTP TIME SERVER SETTINGS

Recommended settings

► PREFERENCES (2s)

NTP Automatically adjusts the time if it's connected to the network.



TOOLS ► Moni. ddbb loc. ► Watchdog

Recommended settings

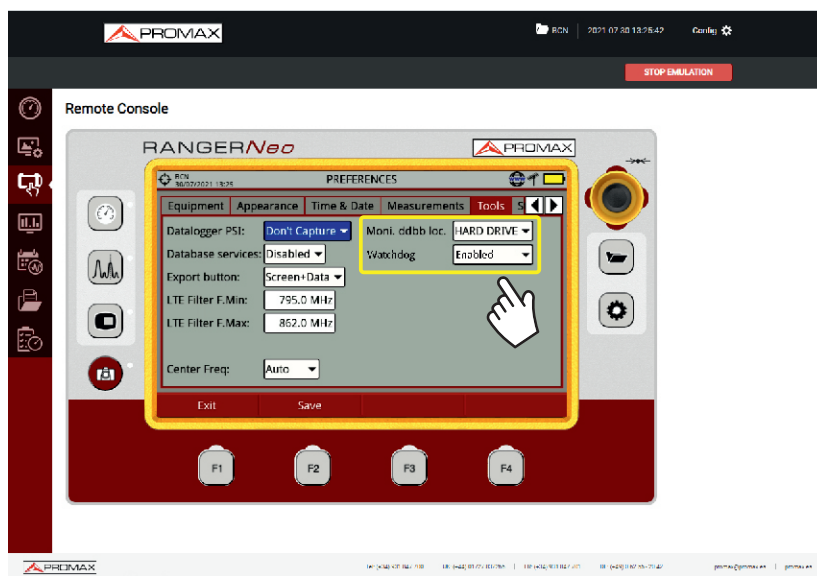
► PREFERENCES (2s)

Moni. ddbb loc. HARD DRIVE
Watchdog Enabled



CAUTION

To do the Monitoring it is recommended to use the "HARD DRIVE" option instead of internal memory. And the watchdog option in "Enabled" mode.

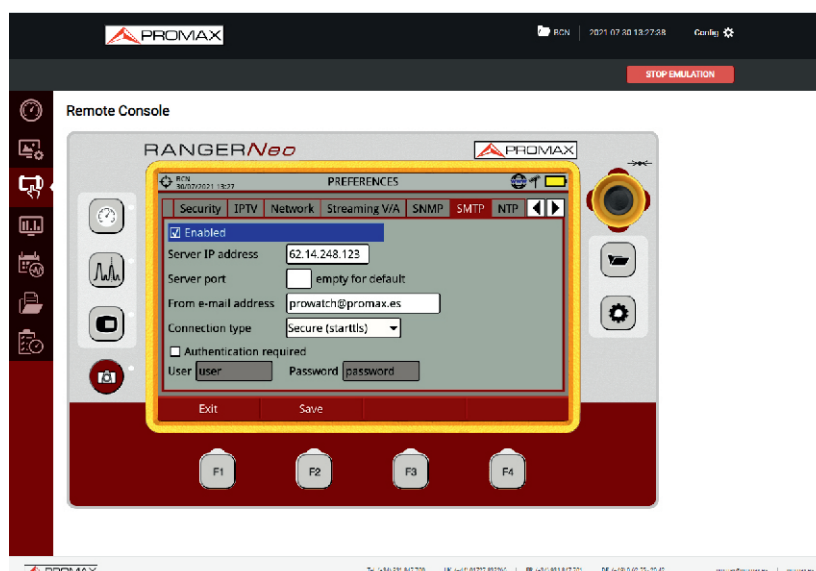


SMTP

Recommended settings

► PREFERENCES (2s)

SMTP Mail server settings for sending alarms.



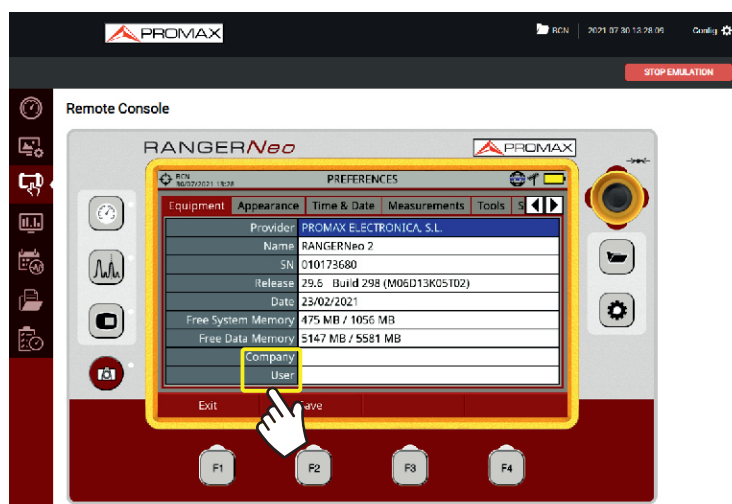
• EQUIPMENT ► Company ► User

Ajustes recomendados

► PREFERENCES (2s)

Company The company to which the alarms are sent.

User Person who the alarms are addressing.



► Neo Console

Remote Control of Equipment



- | | | | |
|--------------------|--|---------------------------------|------------------------------|
| 15 Screen | 18 TV key | 21 Installations management key | 24 Active Function Indicator |
| 16 Measurement key | 19 Export (press >1s)
/ Reference (press <1s) | 22 Settings key | |
| 17 Spectrum key | 20 Joystick | 23 Softkeys | |